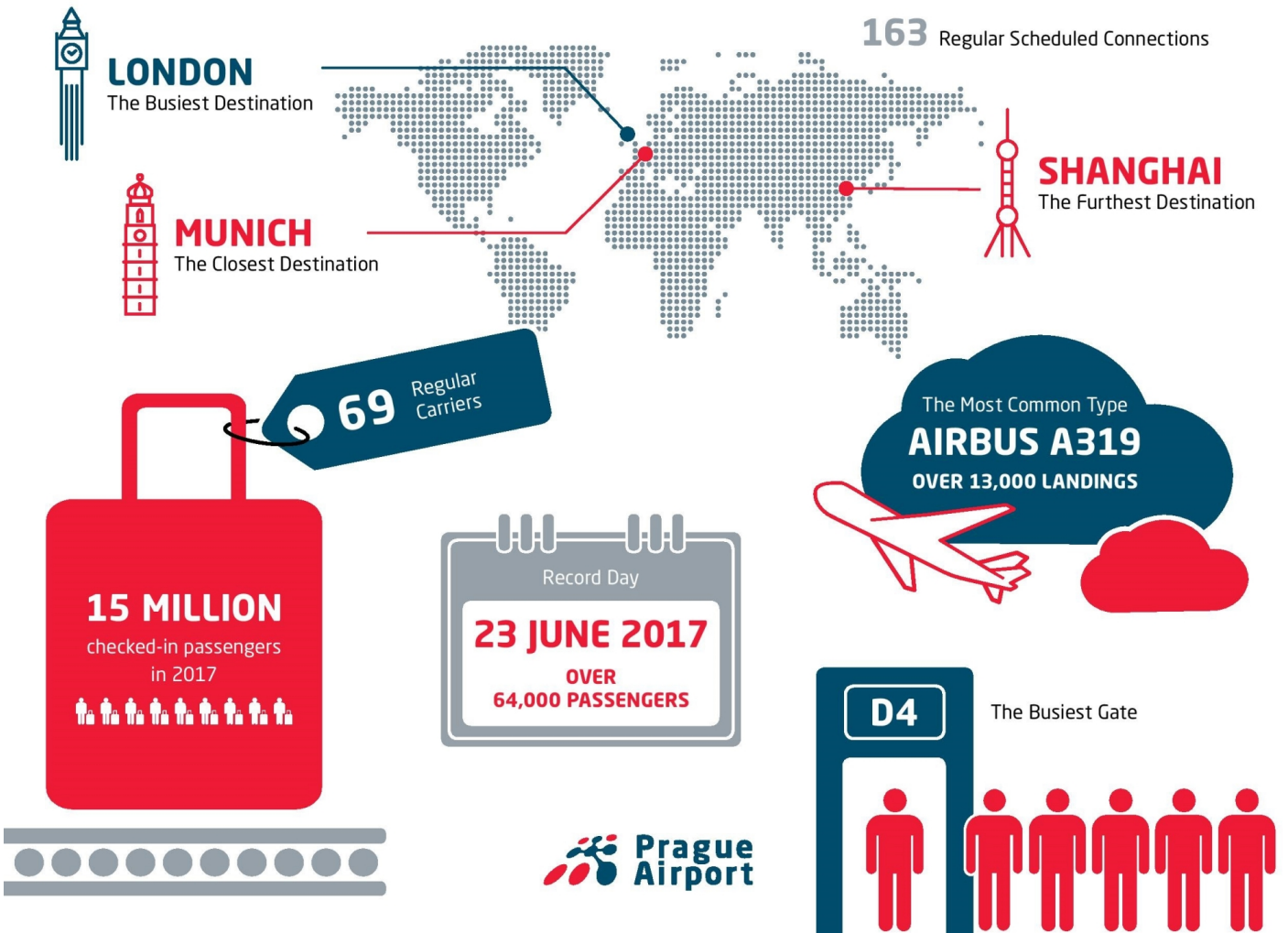




IN RECORD YEAR 2017, THE MOST OPERATED DESTINATION FROM VÁCLAV HAVEL AIRPORT PRAGUE WAS LONDON

News / Airports / Routes

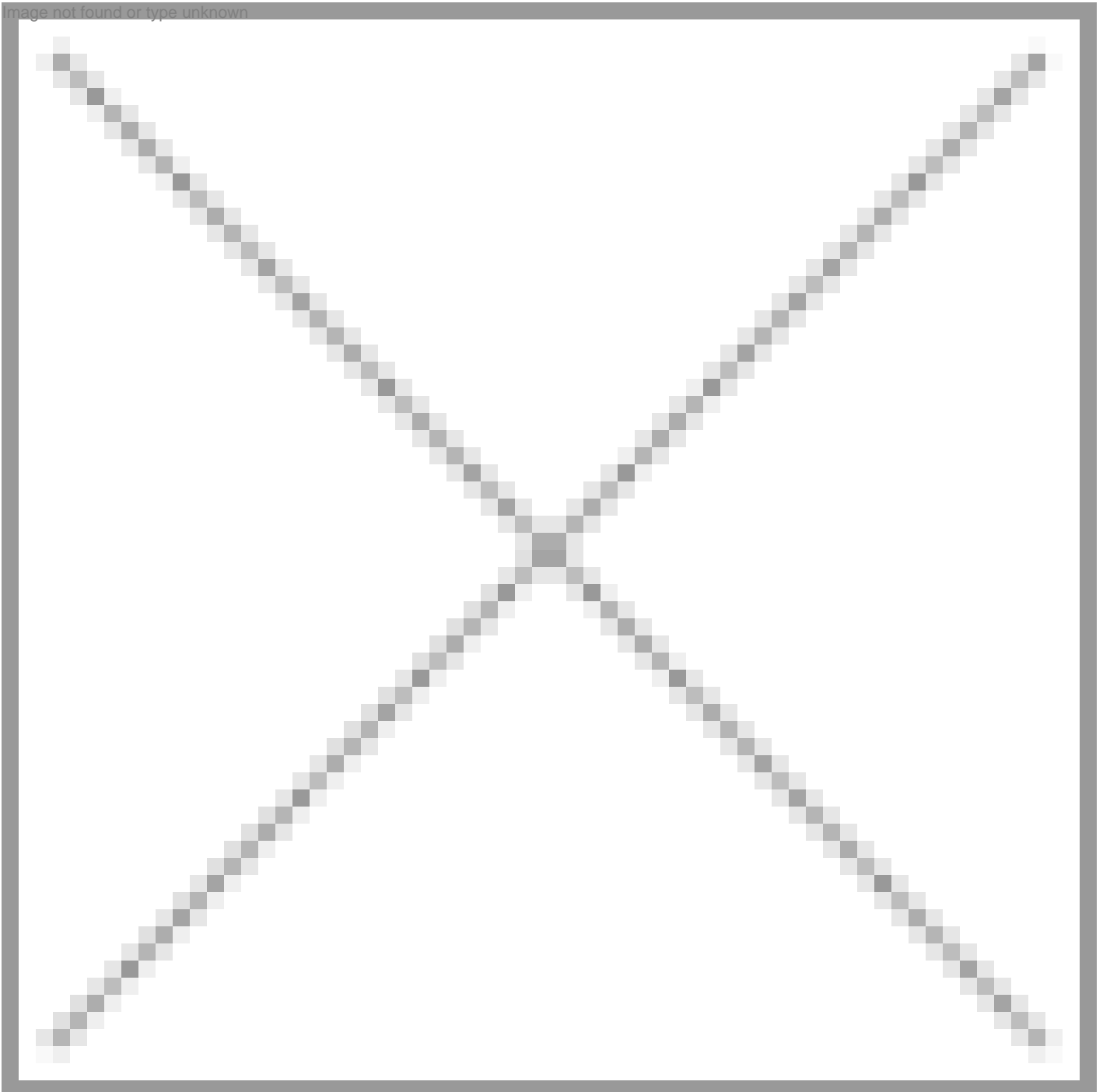


Václav Havel Airport Prague achieved a historic record of 15 million checked passengers. The greatest number of passengers, over 64 thousand, passed through the airport gates on 23 June 2017 and made it the busiest day of the year from the airport operations perspective. During 2017, Prague has been connected with 163 destinations in total, with Shanghai (8,528km) being the furthest place served by regular scheduled flights from Václav Havel Airport Prague and Munich (266km) being the closest. The Prague – London route was the most frequented with up to 14 flights a day and connections to all six London airports offered to passengers.

A total of 69 regular carriers operated their flights from Václav Havel Airport Prague since the beginning of 2017. Airbus A319 was the most frequently used type of aircraft, having landed at the

Prague's airport over 13 thousand times. To board aircraft, passengers used most often D4 gate boarding bridge, designated for handling flights within the Schengen area.

The record 15 million handled passengers have also influenced Prague Airport's non-aviation services. A total of 3.5 million cars used the express parking areas in front of both terminals at Václav Havel Airport Prague. The Praha restaurant in Terminal 1 has also experienced increasing demand, offering about 400 different main courses during the year. As a part of CSR activities, Prague Airport has supported a number of environmental initiatives in its vicinity donating over 24 million Czech crowns.



07 JANUARY 2018

ARTICLE LINK:

<https://50skyshades.com/index.php/news/airports-routes/in-record-year-2017-the-most-operated-destination-from-vaclav-havel-airport-prague-was-london>