



# THE UNLUCKIEST FLIGHT ON NEW YEAR'S EVE: UNITED SAN FRANCISCO – SYDNEY

News / Airports / Routes



**United's San Francisco – Sydney flight on New Year's Eve encountered problems. And once it did, it just couldn't catch a break.**

<a href="#">01-Jan-2016</a>	B772	Near Kailua/Kona, HI	Honolulu Intl ( <a href="#">PHNL</a> )	01:04PM UTC	03:48AM HST	0:43
<a href="#">31-Dec-2015</a>	B772/L	San Francisco Intl ( <a href="#">KSFO</a> )	Kona Intl At Keahole ( <a href="#">PHKO / KOA</a> )	11:00PM PST	01:58AM HST (+1) (2)	4:57
<a href="#">31-Dec-2015</a>	B772/L	San Francisco Intl ( <a href="#">KSFO</a> )	Sydney ( <a href="#">YSSY / SYD</a> )	11:00PM PST		Diverted

Crew reported smoke in the cockpit when the flight was 600 nautical miles south of Kona, Hawaii. So they decided to divert.



The smoke and fumes dissipated and they decided to divert to Honolulu instead.

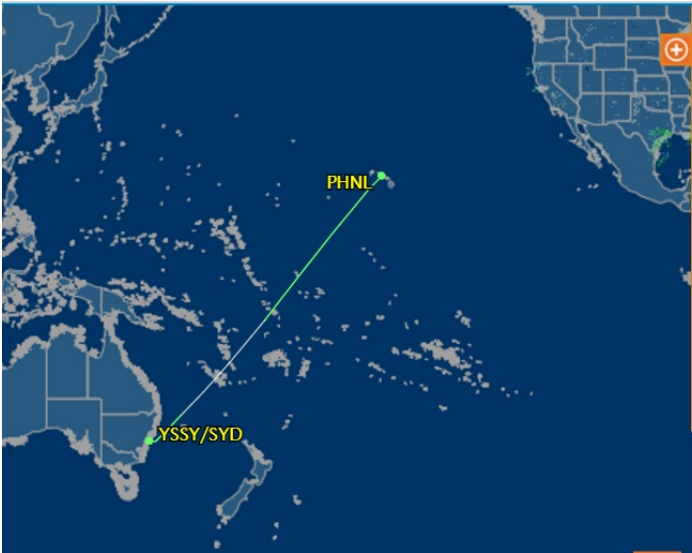
A passenger reported that obviously there was some fire, quite obviously there was smoke in the cockpit. The inflight entertainment system and cabin lights went out, an announcement indicated they were diverting to Kona. The fire apparently was put out, the passengers in the forward cabin were distributed to the aft cabin with cabin crew telling them the seats in the forward cabin could no longer be put upright for landing. Some time later the crew advised that they were now diverting to Honolulu.

Just prior to touchdown in Honolulu the Boeing 777 *suffered a bird strike*

It was New Year's Day at this point. The next day the pilot refused the aircraft for continuing on to Sydney. So United sent replacement aircraft.

Two Boeing 777-200s registrations N206UA and N221UA have been dispatched to Honolulu to continue the flight as flights UA-2102 and UA-2103. UA-2102 is estimated to reach Sydney with a delay of 36.5 hours, UA-2103 is estimated to arrive in Sydney with a delay of 46 hours.

The occurrence aircraft is still on the ground in Honolulu 31 hours after landing (standing Jan 2nd 2016 20:40z).



## United 2102

[\(Track inbound flight\)](#)  
UAL2102 · "United" ([all flights](#)) [united.com](#)

Honolulu Intl ([PHNL](#))                      Sydney ([YSSY / SYD](#))

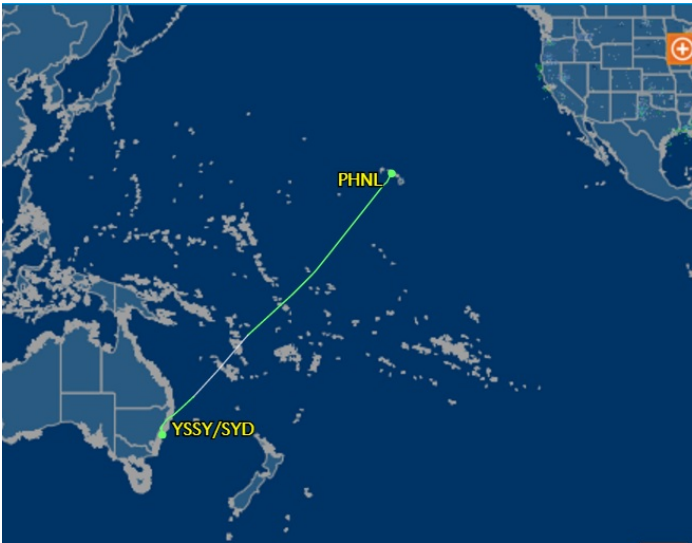
**03:26PM HST**    **09:36PM AEDT (+1)**

Scheduled: 02:00PM HST    Scheduled: 08:12PM AEDT (+1)

[Other flights between these airports](#)

Duration: 9 hours 9 minutes  
**Saturday, January 2, 2016**

<b>Status</b>	Landed yesterday. ( <a href="#">track log &amp; graph</a> )
<b>Aircraft</b>	Boeing 777-200 (twin-jet) ( <a href="#">H/B772/L</a> – <a href="#">photos</a> )
<b>Speed</b>	Filed: 482 kts ( <a href="#">graph</a> )
<b>Altitude</b>	Filed: 36,000 feet ( <a href="#">graph</a> )
<b>Distance</b>	Direct: 5,082 sm    Planned: 5,082 sm    Flown: 5,154 sm



## United 2103

[\(Track inbound flight\)](#)  
UAL2103 · "United" ([all flights](#)) [united.com](#)

Honolulu Intl ([PHNL](#))                      Sydney ([YSSY / SYD](#))

**11:36PM HST**    **06:02AM AEDT (+2)**

Scheduled: 11:00PM HST    Scheduled: 05:49AM AEDT (+2)

[Other flights between these airports](#)

Duration: 9 hours 25 minutes  
**Saturday, January 2, 2016**

<b>Status</b>	Landed over 17 hours ago ( <a href="#">track log &amp; graph</a> )
<b>Aircraft</b>	Boeing 777-200 (twin-jet) ( <a href="#">H/B772/L</a> – <a href="#">photos</a> )
<b>Speed</b>	Filed: 476 kts ( <a href="#">graph</a> )
<b>Altitude</b>	Filed: 40,000 feet ( <a href="#">graph</a> )
<b>Distance</b>	Direct: 5,082 sm    Planned: 5,082 sm    Flown: 5,225 sm

If nothing else, the passengers had a memorable New Year's Eve. And they weren't going to spend New Year's Day in Sydney anyway, since the December 31 late night departure was originally scheduled to arrive the morning of January 2 anyway...!

05 JANUARY 2016

**SOURCE: BOARDINGAREA**  
**ARTICLE LINK:**

<https://50skyshades.com/index.php/news/airports/routes/the-unluckiest-flight-on-new-years-eve-united-san-francisco-sydney>